



■ Some of the photos may include optional equipment.

FORKLIFT TRUCKS **Environmentally - Friendly**

10/13/14/15/18BR-7 AC 20/25BR-7 AC

 **HYUNDAI | FORKLIFT**
HEAVY INDUSTRIES CO.,LTD.

Head Office(Sales Office)
14th FL., HYUNDAI BLDG. 140-2, KYE-DONG, JONGNO-GU, SEOUL, KOREA 110-793
Tel (82) (2) 746-4609,4638 Fax (82) (2) 746-7444-7445

Americas Operation : Hyundai Construction Equipment Americas, Inc.
955 ESTES AVENUE, ELK GROVE VILLAGE IL.,60007 Tel (1) 847-437-3333 Fax (1) 847-437-3574

Europe Operation : Hyundai Heavy Industries Europe N.V.
VOSSENDAAL 11, 2440 GEEL, BELGIUM Tel (32) 14-56-2200 Fax (32) 14-59-3405

PLEASE CONTACT

www.hyundai-ce.com

2011. 04 Rev.2

 **HYUNDAI**
HEAVY INDUSTRIES CO.,LTD.

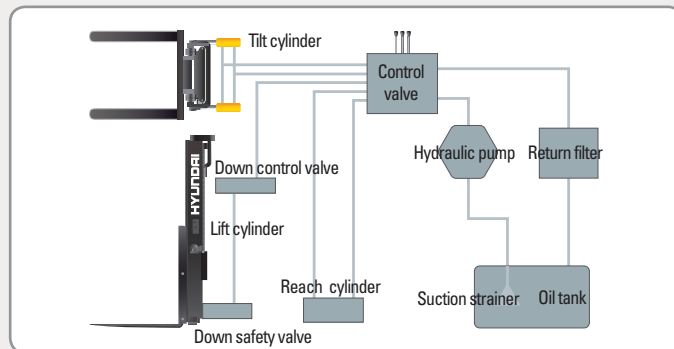
Superior Power & Optimal Performance

Smooth running, efficiently and ergonomically designed, 10/13/14/15/18/20/25BR-7 series are built to meet your needs.



Excellent Gradeability Operation

A powerful drive motor and four wheel configuration provide for exceptional stability and excellent gradeability.



Minimum Turning Radius

Compact design suitable for narrow aisle operation guarantees work efficiency and maximum space utilization.

State-of-the-art Hydraulic System

The latest large-capacity hydraulic system reacts quickly during operation and the low noise control valve increases both efficiency and durability.



Some of the photos may include optional equipment.



Electric Power Steering(EPS)

EPS assures effortless steering allowing less fatigue to the operator. Machine performance and battery life are also enhanced.



Accelerator

The accelerator control provides the operator with precise and smooth directional control.



Versatile Reach Stroke

Multi-roller reach assembly provides a smooth, controlled and safe load handling system. Extended reach allows unsurpassed versatility.



Anti Roll Back

When restarting after stop on a slope, an anti-roll back function ensure operational safety.

High Technology ZAPI Controller

The efficient, almost noiseless, 8Khz(high frequency) ZAPI controller provides smooth quiet operation and protection for low & high voltage, overheating and fault recording.



Drive Motor & Pump Motor

Efficient Schabmueller AC motor guarantees reliability and an optimized motor design provides low noise levels. Temperature sensor ensures long motor life.



■ Some of the photos may include optional equipment.

Comfortable Operation

A design based on human engineering relieves fatigue and increases operator's efficiency.



Newly Designed Steer Control Handle

A newly designed steering control coupled with our new Electric Power Steering control gives the operator exceptionally smooth and controlled steering for tight spaces.



New High Visibility for Safe Operation

The operator is able to work with increased safety and accuracy due to a wider mast view.



User Friendly Hydraulic Control

Minimal operator effort is required for precise, safe and productive control. As a standard layout is used, the operator learning curve is lessened.



Perfect Fit For Busy Operations

An ergonomically designed operator's compartment enables the driver to select the most comfortable working position for increased productivity.



Self - diagnostic LCD Monitor

The LCD monitor has a back-light system to provide a clear view of the system's operation in all environments. The monitor provides information about operation error, system fault, battery level, hour meter plus other various functions.

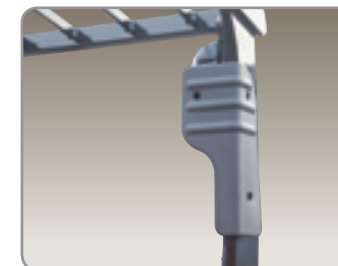
Cup Holder, Console Box & Storage Space

Additional storage spaces are located inside the operating space for operator's convenience.



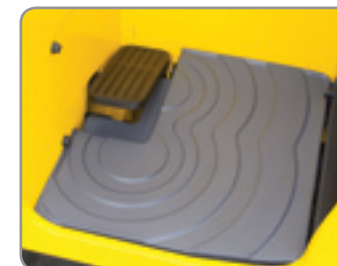
Strong Overhead Guard

The safety overhead guard meets EEC and ANSI regulations and protects the operator during hazardous work.



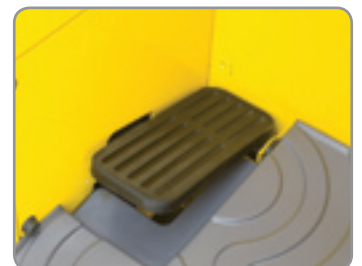
Operator's Compartment

A large plastic cushion is positioned for operator's safety and comfort.



Non Slip Floor Mat

A heavy, vibration dampening, non-slip floor mat reduces operator fatigue and allows for increased productivity.



Break Pedal

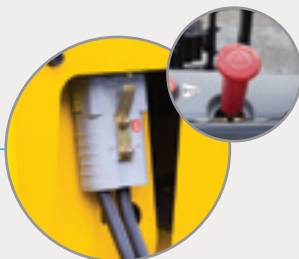
Smoother breaking is assured by the balanced design of the pedal and maintenance costs are lowered as the cover is easily replaceable.

Durability, Easy Maintenance

An ideal arrangement of component parts ensures easy access and convenience for maintenance.



Concentrated Fuse Box for Easy Inspection



Battery Disconnect Lever & Emergency Switch



Disc Brake

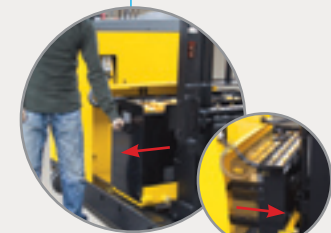
Caliper disc brake increases braking force. Maintenance costs are lowered by easy replaceable brake pad.



Reliable MOSFET Type Controller



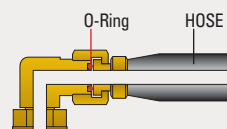
EPS (Electric Power Steering) System



Easy Battery Replacement



Hydraulic Oil Level Gauge



ORFS (O-Ring Face Seal)
ORFS type hose prevents the leaking of hydraulic oil.



High Visibility Headlights & Rear Work Light



DC-DC Converter
DC-DC converter, satisfied with UL & CE, prevents from short circuit, overload and reverse polarity.

Mast Specification (10BR-7/13BR-7)

Mast Type	Maximum Fork Height (mm)	Overall Height (Lowered) (mm)	Overall Height(Extended)(mm)		Free Lift Height(mm)		Tilt Angle(deg)		Load Capacity at 500mm LC(kg)				Truck Weight (Unloaded) (kg)		
			With Load Backrest	Without Load Backrest	With Load Backrest	Without Load Backrest	Fwd	Bwd	Without Side Shift		With Side Shift		10BR-7	13BR-7	
									10/13BR-7	10/13BR-7	10BR-7	13BR-7			
2 / Stage Limited Free Lift	V250	2,525	1,741	3,525	3,035	357	357	3	5	1,000	1,250	1,000	1,250	2,081	2,090
	V270	2,725	1,841	3,725	3,235	357	357	3	5	1,000	1,250	1,000	1,250	2,091	2,100
	*V300	3,025	1,991	4,025	3,535	357	357	3	5	1,000	1,250	1,000	1,250	2,105	2,115
	V330	3,325	2,141	4,325	3,835	357	357	3	5	1,000	1,250	930	1,180	2,121	2,130
	V350	3,525	2,241	4,525	4,035	357	357	3	5	1,000	1,250	930	1,180	2,131	2,140
	V370	3,725	2,341	4,725	4,235	357	357	3	5	1,000	1,200	930	1,130	2,148	2,158
	V400	4,025	2,491	5,025	4,535	357	357	3	5	950	1,150	880	1,080	2,175	2,184
	V450	4,525	2,841	5,525	5,035	357	357	3	5	900	1,050	830	980	2,238	2,247
3 / Stage Full Free Lift	V500	5,025	3,091	6,025	5,535	357	357	3	5	800	950	730	880	2,263	2,272
	V550	5,525	3,341	6,525	6,035	357	357	3	5	700	850	630	780	2,288	2,297
	TF370	3,735	1,806	4,742	4,241	799	1,335	3	5	1,000	1,200	930	1,130	2,256	2,266
	TF400	4,035	1,906	5,042	4,541	899	1,435	3	5	950	1,150	880	1,080	2,277	2,287
	TF430	4,335	2,006	5,342	4,841	999	1,535	3	5	900	1,100	830	1,030	2,298	2,307
	TF450	4,535	2,106	5,542	5,041	1,099	1,635	3	5	900	1,000	830	930	2,316	2,326
	TF470	4,735	2,156	5,742	5,241	1,149	1,685	3	5	850	950	780	880	2,328	2,338
	TF500	5,035	2,256	6,042	5,541	1,249	1,785	3	5	850	900	780	830	2,349	2,359
	TF550	5,535	2,456	6,542	6,041	1,449	1,985	3	5	700	750	630	680	2,411	2,421
	TF600	6,035	2,656	7,042	6,541	1,649	2,185	3	5	600	650	530	580	2,450	2,460
TF650	6,535	2,856	7,542	7,041	1,849	2,385	3	5	500	550	430	480	2,490	2,500	
TF700	7,035	3,056	8,042	7,541	2,049	2,585	3	5	300	350	230	280	2,519	2,529	

Mast Specification (14BR-7/15BR-7/18BR-7)

Mast Type	Maximum Fork Height (mm)	Overall Height (Lowered) (mm)	Overall Height(Extended)(mm)		Free Lift Height(mm)		Tilt Angle(deg)		Load Capacity at 500mm LC(kg)						Truck Weight (Unloaded) (kg)			
			With Load Backrest	Without Load Backrest	With Load Backrest	Without Load Backrest	Fwd	Bwd	Without Side Shift			With Side Shift			14BR-7	15BR-7	18BR-7	
									14/15/18BR-7	14/15/18BR-7	14/15/18BR-7	14BR-7	15BR-7	18BR-7				
2 / Stage Limited Free Lift	V250	2,525	1,741	3,525	3,035	357	357	3	5	1,350	1,500	1,800	1,350	1,500	1,800	2,167	2,285	2,309
	V270	2,725	1,841	3,725	3,235	357	357	3	5	1,350	1,500	1,800	1,350	1,500	1,800	2,177	2,295	2,319
	*V300	3,025	1,991	4,025	3,535	357	357	3	5	1,350	1,500	1,800	1,350	1,500	1,800	2,192	2,310	2,334
	V330	3,325	2,141	4,325	3,835	357	357	3	5	1,350	1,500	1,800	1,280	1,430	1,730	2,207	2,325	2,350
	V350	3,525	2,241	4,525	4,035	357	357	3	5	1,300	1,500	1,800	1,230	1,430	1,730	2,217	2,336	2,360
	V370	3,725	2,341	4,725	4,235	357	357	3	5	1,250	1,500	1,800	1,180	1,430	1,730	2,234	2,353	2,377
	V400	4,025	2,491	5,025	4,535	357	357	3	5	1,200	1,450	1,800	1,130	1,380	1,730	2,271	2,389	2,413
	V450	4,525	2,841	5,525	5,035	357	357	3	5	1,100	1,350	1,700	1,030	1,280	1,730	2,333	2,452	2,476
	V500	5,025	3,091	6,025	5,535	357	357	3	5	1,000	1,250	1,500	930	1,180	1,430	2,359	2,477	2,501
	V550	5,525	3,341	6,525	6,035	357	357	3	5	900	1,100	1,050	830	1,030	980	2,384	2,502	2,526
3 / Stage Full Free Lift	TF370	3,735	1,806	4,742	4,241	799	1,335	3	5	1,300	1,500	1,800	1,230	1,430	1,730	2,364	2,482	2,507
	TF400	4,035	1,906	5,042	4,541	899	1,435	3	5	1,250	1,450	1,750	1,180	1,380	1,680	2,385	2,503	2,528
	TF430	4,335	2,006	5,342	4,841	999	1,535	3	5	1,150	1,400	1,700	1,080	1,330	1,630	2,406	2,524	2,549
	TF450	4,535	2,106	5,542	5,041	1,099	1,635	3	5	1,100	1,350	1,650	1,030	1,280	1,580	2,425	2,543	2,567
	TF470	4,735	2,156	5,742	5,241	1,149	1,685	3	5	1,000	1,300	1,600	930	1,230	1,530	2,436	2,554	2,579
	TF500	5,035	2,256	6,042	5,541	1,249	1,785	3	5	950	1,200	1,550	880	1,130	1,480	2,457	2,575	2,600
	TF550	5,535	2,456	6,542	6,041	1,449	1,985	3	5	800	1,050	1,300	730	980	1,230	2,523	2,641	2,665
	TF600	6,035	2,656	7,042	6,541	1,649	2,185	3	5	700	900	1,050	630	830	980	2,561	2,679	2,704
	TF650	6,535	2,856	7,542	7,041	1,849	2,385	3	5	600	750	800	530	680	730	2,601	2,719	2,743
	TF700	7,035	3,056	8,042	7,541	2,049	2,585	3	5	450	550	550	380	480	480	2,630	2,748	2,773

* STANDARD

Load Capacity

