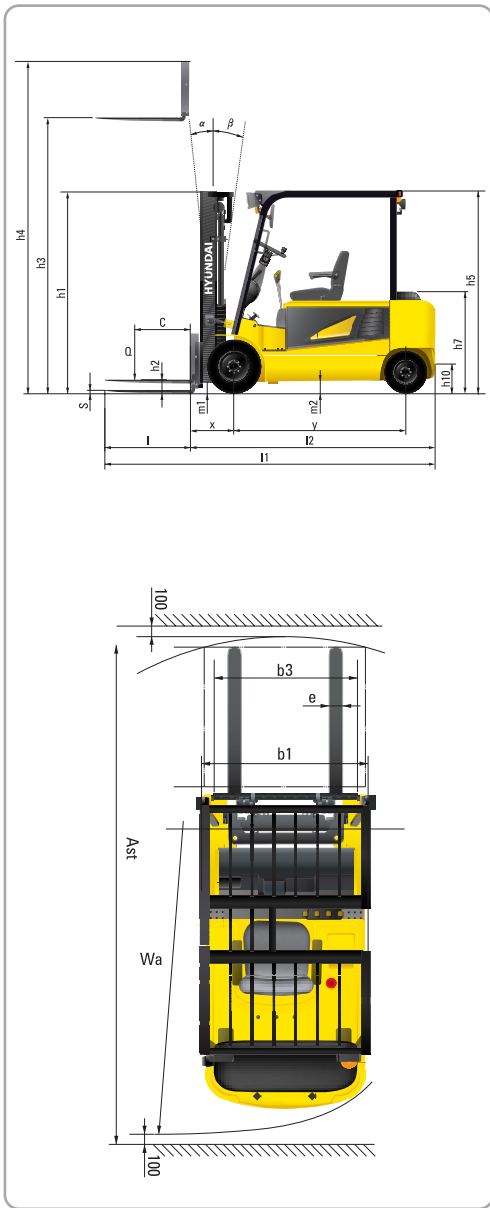


Dimension



Specification

Identification		HYUNDAI			
1.1	Manufacturer				
1.2	Manufacturer's type designation	35B-7	40B-7	45B-7	50B-7
1.3	Drive : electric(battery or mains) ,diesel, petrol ,fuel gas, manual	Electric	Electric	Electric	Electric
1.4	Type of operation : hand, pedestrian, standing, seated, order - picker	Seated	Seated	Seated	Seated
1.5	Load capacity / rated load	Q kg	3,500	4,000	4,500
1.6	Load center distance	c mm	500	500	500
1.8	Load distance, center of drive axle to fork	x mm	535	535	540
1.9	Wheelbase	y mm	1,855	2,000	2,000
Weights					
2.1	Service weight	kg	6,415	6,655	7,020
2.2	Axle loading, loaded front / rear	kg	8,934 / 981	9,580 / 1,075	10,348 / 1,173
2.3	Axle loading , unloaded front / rear		3,481 / 2,934	3,510 / 3,145	3,519 / 3,501
Wheels, Chassis					
3.1	Tires : solid rubber(V), superelastic(SE), pneumatic(P), polyurethane(PE)	SE, P	SE, P	SE, P	SE, P
3.2	Tires size, front(ϕ x width)	250-15	250-15	250-15	28 x 12.5 - 15
3.3	Tires size, rear(ϕ x width)	21 x 8 - 9	21 x 8 - 9	21 x 8 - 9	21 x 8 - 9
3.5	Wheels, number front rear(x = driven wheels)	2 x / 2	2 x / 2	2 x / 2	2 x / 2
3.6	Track width, front	mm	1,141	1,141	1,114
3.7	Track width, rear	mm	1,090	1,090	1,090
Basic Dimensions					
4.1	Mast / fork carriage tilt forward / backward	degrees	6 / 10	6 / 10	6 / 10
4.2	Lowered mast height	h1 mm	2,225	2,225	2,230
4.3	Free lift	h2 mm	120	120	120
4.4	Lift height	h3 mm	3,000	3,000	2,900
4.5	Extended mast height	h4 mm	4,224	4,224	4,146
4.7	Overhead load guard (cab) height	h5 mm	2,230	2,320	2,320
4.8	Seat height / Standing height	h7 mm	1,166	1,166	1,166
4.12	Coupling height	h10 mm	460	460	460
4.19	Overall length	l1 mm	3,847	3,982	4,040
4.20	Length to face of forks	l2 mm	2,777	2,922	2,970
4.21	Overall width	b1 mm	1,370	1,370	1,424
4.22	Fork dimensions	s / e / l mm	50 x 122 x 1,070	50 x 122 x 1,070	50 x 150 x 1,070
4.23	Fork carriage ISO 2328, class / type A, B		III / A	III / A	IV / A
4.24	Fork - carriage width	b3 mm	1,300	1,300	1,300
4.31	Ground clearance, loaded, under mast	m1 mm	160	160	165
4.32	Ground clearance, centre of wheelbase	m2 mm	160	160	156
4.33	Aisle width for pallets 1,000 x 1,200 crossways	Ast mm	4,195	4,350	4,395
4.34	Aisle width for pallets 800 x 1,200 length ways	Ast mm	3,995	4,150	4,245
4.35	Turning radius	Wa mm	2,460	2,615	2,660
4.36	Smallest pivot point distance	mm	-	-	-
Performance Data					
5.1	Travel speed, loaded / unloaded (80V)	km/h	18 / 18	18 / 18	18 / 18
5.2	Lift speed, loaded / unloaded (80V)	mm/sec	380 / 500	380 / 500	330 / 500
5.3	Lowering speed, loaded / unloaded	mm/sec	550 / 520	550 / 520	550 / 520
5.5	Drawbar pull, loaded / unloaded S2 60 min	N	-	-	-
5.6	Max. drawbar pull, loaded / unloaded S2 5 min	N	28,931 / 29,122	28,185 / 29,075	28,662 / 29,003
5.7	Gradient performance, loaded / unloaded S2 30 min	%	-	-	-
5.8	Max. gradient performance, loaded / unloaded S2 5 min	%	30 / 26	28 / 26	26 / 24
5.9	Acceleration time, loaded / unloaded		-	-	-
5.10	Service brake		Hyd.	Hyd.	Hyd.
E - Motor					
6.1	Drive motor rating S2 60 min (80V)	kW	8.1 x 2	8.1 x 2	8.1 x 2
6.2	Pump motor rating at S3 - 15 % (80V)	kW	23.8	23.8	23.8
6.4	Battery voltage, nominal capacity K5 (80V)	Ah	600	700	700
6.5	Battery weight (min)	kg	1,780	2,095	2,095
	Battery compartment dimensions L / W / H	mm	1,033 / 859 / 790	1,033 / 1,004 / 790	1,033 / 1,004 / 790
6.6	Type of drive control		AC	AC	AC



■ Some of the photos may include optional equipment.

FORKLIFT TRUCKS Environmentally - Friendly

35/40/45/50B-7 AC

HYUNDAI | FORKLIFT
HEAVY INDUSTRIES CO.,LTD.

Head Office(Sales Office)
14th FL., HYUNDAI BLDG. 140-2, KYE-DONG, JONGNO-GU, SEOUL, KOREA 110-793
Tel (82) (2) 746-4609,4638 Fax (82) (2) 746-7444-7445

Americas Operation : Hyundai Construction Equipment Americas, Inc.
955 ESTES AVENUE, ELK GROVE VILLAGE IL., 60007 Tel (1) 847-437-3333 Fax (1) 847-437-3574

Europe Operation : Hyundai Heavy Industries Europe N.V.
VOSSENDAAL 11, 2440 GEEL, BELGIUM Tel (32) 14-56-2200 Fax (32) 14-59-3405

PLEASE CONTACT

www.hyundai-ce.com

2011. 10 Rev.2

HYUNDAI
HEAVY INDUSTRIES CO.,LTD.

We build a better future

New Criterion of Forklift Trucks

Hyundai introduces a new line of 7-series battery forklift trucks. Excellent power and performance makes your business more profitable.



■ Some of the photos may include optional equipment.

The New AC Control B Series

Designed with a durable frame and built to offer excellent stability and a smooth ride, AC Control B Series trucks are real workhorses.



■ Some of the photos may include optional equipment.

High Technology ZAPI Controller Eliminate “almost noiseless”

The efficient, 8Khz(high frequency) ZAPI controller provides smooth operation and protection for low & high voltage, overheating and fault recording.

- Features**
- Regeneration : Direction change, Deceleration, Braking
 - The new AC motors offers a of 10% greater efficiency than traditional DC motors
 - Various performance models are available to maximize efficiency and equipped to work in all types of operations
 - Enhanced Efficiency
 - H (High) Mode, N (Normal) Mode, E (Economic) Mode
 - Turtle Mode : 10km/h



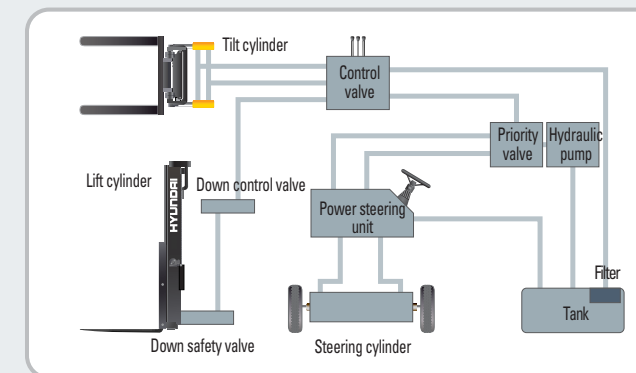
Superior Power & Optimal Performance

Efficient, smooth running and ergonomically designed AC control series are built to meet you needs.



Fork Safety Features

When the forks are being lowered, a down-control valve maintains the controlled speed. The down-safety valve prevents forks from dropping down in case of sudden damage of hydraulic line.



State-of-the-art hydraulic System

The latest large-capacity hydraulic system reacts quickly during operation, and a low noise control valve increases both efficiency and durability.

Anti-Rollback System, Faster Travel Speed & Gradeability

ZAPI's anti-rollback system provides safe ramp operation plus exceptional ramp start capabilities.

The powerful high-output motors provide greater acceleration, better gradeability and faster travel speed on any tough terrain or slope.



Travel Speed (MAX)

Model	km / h
35B-7	18
40B-7	18
45B-7	18
50B-7	18

Gradeability (MAX)

Model	%
35B-7	30
40B-7	28
45B-7	26
50B-7	24



Increased Mast tilting Angle

Utilizing the mast tilting angle of 6 degrees forward and 10 degrees backward, the operator can rapidly perform loading and unloading jobs safely.



Wet Disc Brake System

The wet disc brake system is virtually maintenance free and is enclosed to protect from dust and water.



Fully Hydrostatic Power Steering

A hydraulic steering system ensures smooth & precise steering which prevents kick-back.



OPSS (Operator Presence Sensing System)

Control of mast tilting, lifting and lowering is not possible through operation of the appropriate control when the operator is not in the seat

Comfortable Operation

A design based on human engineering relieves fatigue and increases operator's efficiency.



Adjustable Steering Wheel

Steering wheel can be adjusted by a lever on the right-hand side for the most comfortable operator position.



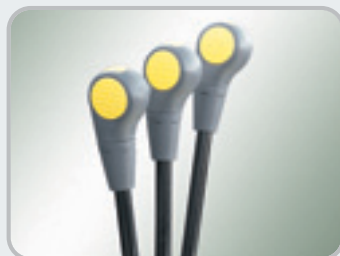
Easy Control Direction Lever

Finger tip control of forward and reverse lever allows the operator to remain in control of equipment.



Multi-Functional Switch

Integrated multi-functional switch lever enables the driver to operate lights and horn conveniently.



Prompt Response of Operating Control Levers

Only minimal operator's effort is required for precise, safe and productive control.



High visibility for safe operation

The operator is able to work with increased safety and accuracy due to a wider view.



Horn

Perfect Compartment Fit For Any Operator

An ergonomically designed operator's compartment enables the driver to select the most comfortable working position for increased productivity.



Optimum Pedal Position & Non-slip Mat

Based on human engineering, the accelerator and brake pedals are optimally positioned for convenience while operating the equipment.

Easily Adjustable Suspension Seat

An attractive and adjustable seat, based on a human engineering design, provides greater comfort, safety and durability.

■ Options : Seat belt, Arm rest, Hip restraint



AC Control System Features

- Excellent Control Ability
 - Various performance modes to meet all working conditions
 - Slow rolling on ramp & ramp start
- Enhanced motor efficiency & Excellent regeneration

■ Some of the photos may include optional equipment.



Self - diagnostic LCD Monitor

The LCD monitor has a back-light system to provide a clear view of the system's operation in all environments. The monitor provides information about operation error, system fault, battery level, hour meter and selected performance mode. Other various functions include items such as self diagnostics and password activation. These features are can be accessed without the need of a laptop or handset.

functions include items such as self diagnostics and password activation. These features are can be accessed without the need of a laptop or handset.

Keyboard Buttons / Performance mode

Operator can select performance mode easily according to working condition.

Console Box & Cup Holder

Additional storage spaces are located inside the operating space for operator's convenience.



High Durability & Simple Arrangement

An ideal arrangement of component parts ensures easy access and convenience for maintenance.



■ Some of the photos may include optional equipment.



Strong Overhead Guard

The safety overhead guard exceeds EEC and ANSI regulations and protects the operator during hazardous work.



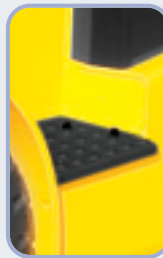
Parking Brake

Ratchet type parking brake requires less effort from the operator to set.



Hand Grip & Large Footboard

Wide "open" step and large hand grip offer convenience and safety when entering and exiting the truck.

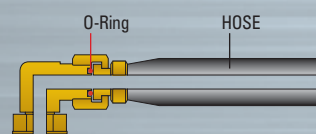


Rear Safety Lamp

Rear combination lamps with turn signal lamps, tail lamp and brake lights are positioned for high visibility to ensure safety.



Battery Locking System



ORFS (O-Ring Face Seal)

ORFS type hose prevents the leaking of hydraulic oil.

High quality AC motors

Enclosed motors prolong durability. No brush and no commetator. (No arc and no spark)



Easy Maintenance & Serviceability

Battery change is easy with a swing-up compartment and a slotted overhead guard. Opening and closing of the battery cover is made easy with a gas-spring assisted cylinder.



Easy battery replacement

Battery change is easy with swing-up compartment and slotted overhead guard. Opening and closing of battery cover is made easy with a gas-spring assist cylinder.



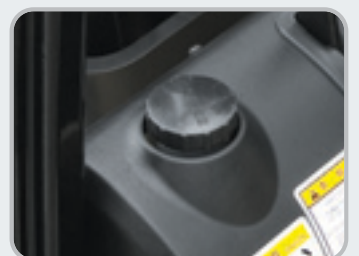
A concentrated fuse box for easy inspection



Oil Tank Port



Steering Sensor



Easy to Check Brake Oil Level



Hydraulic motor



Battery Disconnect Lever / Switch



High Visibility Headlights & Rear Work Light



DC-DC Converter

DC-DC converter exceeds UL & CE requirements to prevent short circuit, overload and reverse polarity

Mast Specification (35/40/45B-7)

Mast Type		Overall Height (Lowered) (mm)	Maximum Fork Height (mm)	Free Lift(mm)		Tilt Angle (deg) Fwd / Bwd	Load Capacity without side shift at (500mm LC) (kg)						Load Capacity with side shift at (500mmLC) (kg)						Truck Weight (Unloaded) (kg)					
				With Backrest	Without Backrest		Single Tire			Double Tire			Single Tire			Double Tire			Single Tire		Double Tire			
							35/40/45B-7	35/40/45B-7	35/40/45B-7	35B-7	40B-7	45B-7	35B-7	40B-7	45B-7	35B-7	40B-7	45B-7	35B-7	40B-7	45B-7	35B-7	40B-7	45B-7
2-Stage limited free lift	V270	2,075	2,720	120	120	6 / 10	3,500	4,000	4,500	3,500	4,000	4,500	3,500	4,000	4,500	3,500	4,000	4,500	6,389	6,629	6,994	6,566	6,806	7,171
	* V300	2,225	3,020	120	120	6 / 10	3,500	4,000	4,500	3,500	4,000	4,500	3,500	4,000	4,500	3,500	4,000	4,500	6,415	6,655	7,020	6,592	6,832	7,197
	V330	2,375	3,320	120	120	6 / 10	3,500	4,000	4,500	3,500	4,000	4,500	3,450	4,000	4,500	3,500	4,000	4,500	6,440	6,680	7,046	6,617	6,857	7,223
	V350	2,525	3,520	120	120	6 / 10	3,500	4,000	4,500	3,500	4,000	4,500	3,400	4,000	4,450	3,450	4,000	4,500	6,465	6,705	7,070	6,658	6,898	7,247
	V370	2,625	3,720	120	120	6 / 10	3,500	4,000	4,500	3,500	4,000	4,500	3,400	3,950	4,400	3,400	4,000	4,450	6,481	6,721	7,087	6,694	6,933	7,264
	V400	2,835	4,020	120	120	6 / 10	3,500	4,000	4,500	3,500	4,000	4,500	3,300	3,900	4,300	3,350	3,900	4,350	6,516	6,756	7,122	6,619	6,858	7,299
	V450	3,085	4,520	120	120	6 / 6	3,400	4,000	4,450	3,450	4,000	4,500	3,200	3,750	4,150	3,200	3,800	4,200	6,558	6,798	7,165	6,735	6,975	7,342
3-Stage full free lift	V500	3,335	5,020	120	120	6 / 6	3,300	3,900	4,300	3,350	3,900	4,360	3,100	3,650	4,050	3,100	3,650	4,100	6,602	6,842	7,207	6,778	7,019	7,385
	TF370	2,025	3,730	812	1,139	6 / 6	3,400	4,000	4,450	3,400	4,000	4,450	3,150	3,700	4,150	3,200	3,800	4,200	6,641	6,881	7,214	6,806	7,046	7,432
	TF400	2,125	4,030	912	1,239	6 / 6	3,300	3,900	4,350	3,350	3,950	4,350	3,100	3,650	4,100	3,150	3,700	4,150	6,666	6,906	7,240	6,831	7,071	7,457
	TF430	2,225	4,330	1,012	1,339	6 / 6	3,250	3,850	4,250	3,300	3,850	4,250	3,050	3,600	4,000	3,050	3,650	4,050	6,692	6,932	7,266	6,857	7,097	7,483
	TF450	2,285	4,510	1,072	1,399	6 / 6	3,200	3,800	4,200	3,250	3,850	4,200	3,000	3,550	3,950	3,050	3,600	4,000	6,707	6,947	7,281	6,872	7,112	7,499
	TF470	2,375	4,720	1,162	1,489	6 / 6	3,150	3,750	4,150	3,200	3,800	4,150	2,950	3,500	3,900	3,000	3,550	3,950	6,731	6,971	7,305	6,896	7,136	7,522
	TF500	2,475	5,020	1,262	1,589	6 / 6	3,100	3,650	4,100	3,150	3,700	4,100	2,900	3,450	3,850	2,950	3,500	3,900	6,756	6,996	7,330	6,921	7,161	7,548
	TF550	2,655	5,520	1,442	1,769	6 / 6	3,000	3,550	3,950	3,050	3,600	3,950	2,800	3,350	3,750	2,850	3,400	3,800	6,808	7,048	7,382	6,973	7,213	7,600
	TF600	2,835	6,030	1,622	1,949	6 / 6	2,900	3,450	3,850	2,950	3,500	3,850	2,750	3,250	3,600	2,750	3,300	3,650	6,847	7,087	7,422	7,012	7,252	7,640

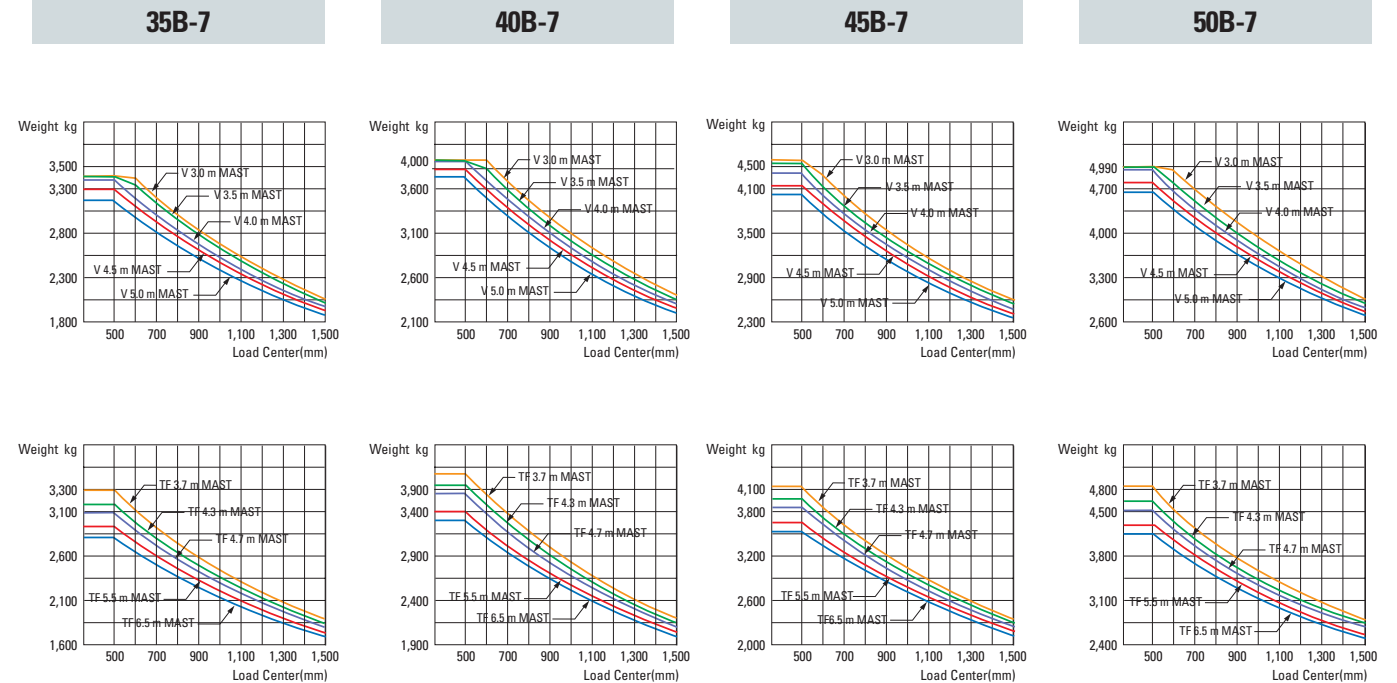
* Standard

Mast Specification (50B-7)

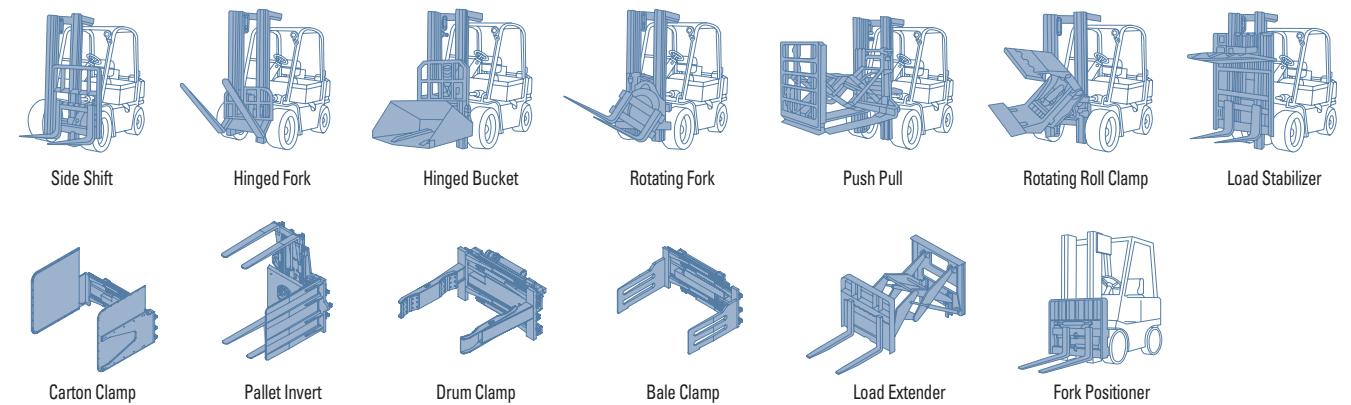
Mast Type		Overall Height (Lowered) (mm)	Maximum Fork Height (mm)	Free Lift		Tilt Angle (deg)		Load Capacity without side shift at (500mm LC) (kg)		Load Capacity with side shift at (500mm LC) (kg)		Truck Weight (Unloaded) (kg)	
				With Backrest (mm)	Without Backrest (mm)	Fwd	Bwd	Single Tire	Double Tire	Single Tire	Double Tire	Single Tire	Double Tire
2-Stage limited free lift	V260	2,080	2,620	120	120	6	10	4,990	4,990	4,990	4,990	7,494	7,610
	* V290	2,230	2,920	120	120	6	10	4,990	4,990	4,990	4,990	7,520	7,636
	V320	2,380	3,220	120	120	6	10	4,990	4,990	4,990	4,990	7,546	7,661
	V340	2,530	3,420	120	120	6	10	4,990	4,990	4,990	4,990	7,570	7,686
	V360	2,630	3,620	120	120	6	10	4,990	4,900	4,990	4,950	7,587	7,703
	V390	2,840	3,920	120	120	6	10	4,990	4,850	4,990	4,850	7,622	7,738
	V440	3,090	4,420	120	120	6	6	4,990	4,700	4,900	4,700	7,664	7,780
3-Stage full free lift	V490	3,340	4,920	120	120	6	6	4,850	4,550	4,750	4,600	7,708	7,823
	TF360	2,030	3,662	807	1,074	6	6	4,990	4,700	4,900	4,750	7,656	7,824
	TF390	2,130	3,962	907	1,174	6	6	4,890	4,600	4,800	4,650	7,682	7,850
	TF420	2,230	4,262	1,007	1,274	6	6	4,800	4,550	4,700	4,550	7,708	7,876
	TF440	2,290	4,442	1,067	1,334	6	6	4,750	4,500	4,650	4,500	7,724	7,891
	TF460	2,380	4,652	1,157	1,424	6	6	4,700	4,400	4,600	4,450	7,747	7,915
	TF490	2,480	4,952	1,257	1,524	6	6	4,600	4,350	4,500	4,350	7,773	7,941
	TF540	2,660	5,452	1,437	1,704	6	6	4,500	4,200	4,350	4,250	7,824	7,992
	TF590	2,840	5,962	1,617	1,884	6	6	4,350	4,100	4,200	4,100	7,864	8,032

* Standard

Load Capacity



Various Attachments



Optional Items

• Fork (L x W x T) (mm)

35B-7 : 1,220 x 122 x 50 / 1,370 x 122 x 50 / 1,520 x 122 x 50
 1,670 x 122 x 50 / 1,820 x 122 x 50 / 1,970 x 122 x 50
 40B-7 : 1,220 x 122 x 50 / 1,370 x 122 x 50 / 1,520 x 122 x 50
 1,670 x 122 x 50 / 1,820 x 122 x 50 / 1,970 x 122 x 50
 45B-7 : 1,220 x 150 x 50 / 1,370 x 150 x 50 / 1,520 x 150 x 50
 1,670 x 150 x 50 / 1,820 x 150 x 50 / 1,970 x 150 x 50
 50B-7 : 1,220 x 150 x 50 / 1,370 x 150 x 50 / 1,520 x 150 x 50
 1,670 x 150 x 50 / 1,820 x 150 x 50 / 1,970 x 150 x 50

• Mast

2 Stage Limited Free Lift
 3 Stage Limited Free Lift

• Overshoe

1,800 / 2,000 / 2,200

• Internal Piping

• Hose - Reel

• Beacon (Amber, Red, Blue)

• Rear Work Light

• Cold Storage

• Tire

Pneumatic, Single
 Non-Marking, Single
 Pneumatic, Double
 Non-Marking, Double

• CE

• UL E.EE

• MCV

4 Spool 4 Lever