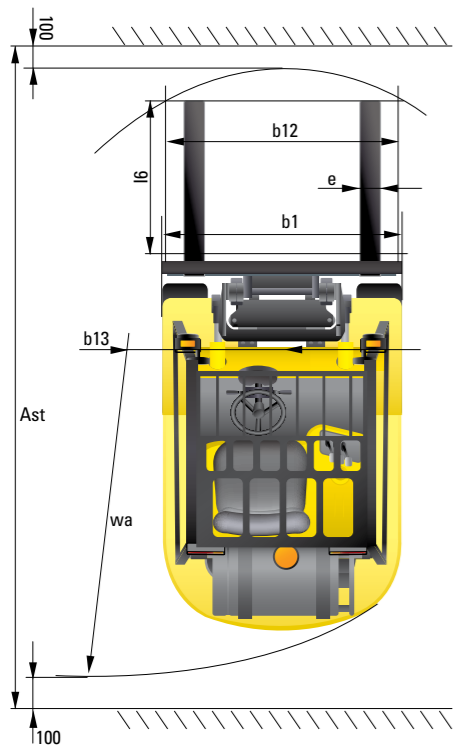
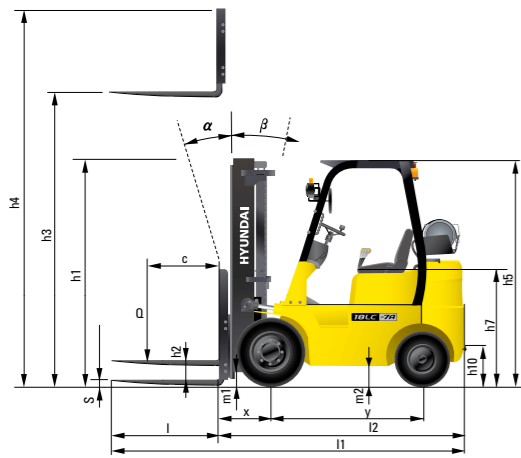


Dimension



Specification

Identification				
1.1	Manufacturer	Hyundai	Hyundai	Hyundai
1.2	Manufacturer's type designation	15LC-7A	18LC-7A	20LC-7A
1.3	Drive: electric (battery or mains), diesel, petrol, fuel gas, manual	LP	LP	LP
1.4	Type of operation: hand, pedestrian, standing, seated, order-picker	seated	seated	seated
1.5	Load capacity / rated load	Q (kg) 1,500	1,750	2,000
1.6	Load center distance	c (mm) 500	500	500
1.8	Load distance, center of drive axle to fork	x (mm) 393	393	398
1.9	Wheelbase	y (mm) 1,250	1,250	1,250
Weights				
2.1	Service weight	kg 2,887	3,087	3,217
2.2	Axle loading, loaded front/rear	kg 1,141 / 1,746	1,077 / 2,010	1,064 / 2,153
2.3	Axle loading, unloaded front/rear	kg 3,713 / 674	4,085 / 752	4,501 / 716
Wheels, Chassis				
3.1	Tires: solid rubber, superplastic, pneumatic, polyurethane	Solid rubber	Solid rubber	Solid rubber
3.2	Tires size, front (width x ϕ)	18 x 6 x 12,125	18 x 6 x 12,125	18 x 7 x 12,125
3.3	Tires size, rear (width x ϕ)	14 x 5 x 10	14 x 5 x 10	14 x 5 x 10
3.5	Wheels, number front x rear (x=driven wheels)	2 x 2	2 x 2	2 x 2
3.6	Track width, front	b10 (mm) 808	808	834
3.7	Track width, rear	b11 (mm) 853	853	853
Basic Dimensions				
4.1	Mast / fork carriage tilt forward / backward (α / β)	degrees 6 / 8	6 / 8	6 / 8
4.2	Lowered mast height	h1 (mm) 2,125	2,125	2,128
4.3	Free lift	h2 (mm) 115	115	120
4.4	Lift height	h3 (mm) 3,325	3,325	3,330
4.5	Extended mast height	h4 (mm) 4,332	4,332	4,332
4.7	Overhead load guard (cab) height	h5 (mm) 2,145	2,145	2,145
4.8	Seat height / standing height	h7 (mm) 1,040	1,040	1,040
4.12	Coupling height	h10 (mm) 229	229	229
4.19	Overall length	h11 (mm) 2,998	3,028	3,059
4.20	Length to face of forks	h12 (mm) 2,098	2,128	2,159
4.21	Overall width	b1 (mm) 980	980	1,012
4.22	Fork dimensions	s / e / l (mm) 35 x 100 x 900	35 x 100 x 900	40 x 100 x 900
4.23	Fork carriage ISO 2328, class / type A,B	II / A	II / A	II / A
4.24	Fork-carriage width	b12 (mm) 890	890	890
4.31	Ground clearance, loaded, under mast	m1 (mm) 90	90	93
4.32	Ground clearance, centre of wheelbase	m2 (mm) 96	96	96
4.33	Aisle width for pallets 1000x1200 crossways	Ast (mm) 3,486	3,515	3,540
4.34	Aisle width for pallets 800x1200 lengthways	Ast (mm) 3,685	3,714	3,739
4.35	Turning radius	Wa (mm) 1,891	1,920	1,940
4.36	Smallest pivot point distance	b13 (mm) 528	528	528
Performance Data				
5.1	Travel speed, Unloaded	km/h 19.5	19.5	19.7
5.2	Lift speed, Loaded/Unloaded	mm/s 650 / 680	650 / 680	650 / 680
5.3	Lowering speed, Loaded/Unloaded	mm/s 500 / 450	500 / 450	500 / 450
5.5	Drawbar pull, Loaded	kg 1,609	1,612	1,582
5.7	Gradient performance, Loaded	% 35.1	31.3	28.4
5.10	Service brake	Mechanic / Hydraulic	Mechanic / Hydraulic	Mechanic / Hydraulic
Engine				
6.1	Engine manufacturer / type	L4GC	L4GC	L4GC
6.2	Engine power acc. to ISO 1585	PS 50	50	50
6.3	Rated speed	1/min 2,450	2,450	2,450
6.4	No. of cylinder / cubic capacity	/cm ³ 4 / 1,975	4 / 1,975	4 / 1,975
Other Details				
8.2	Type of drive control	Power Shift	Power Shift	Power Shift
8.3	Operating pressure (System / Attach)	bar 190 / 150	190 / 150	190 / 150
8.4	Oil volume	liter 24	24	24
8.5	Noise	db(A) 80	80	80



Some of the photos may include optional equipment.

HYUNDAI LPG FORKLIFT TRUCKS Applied Tier 4 Engine

15LC/18LC/20LC-7A

HYUNDAI FORKLIFT
HEAVY INDUSTRIES CO., LTD.

Head Office (Sales Office)
14th FL., HYUNDAI BLDG. 140-2, KYE-DONG, JONGNO-GU, SEOUL, KOREA 110-793
Tel (82) (2) 746-4526, 4529 Fax (82) (2) 746-7444-7445

Americas Operation: Hyundai Construction Equipment Americas, Inc.
6100 ATLANTIC BOULEVARD NORCROSS GA 30071 U.S.A TEL: (1)847-678-823-7802 FAX: (1)847-678-823-7778

Europe Operation: Hyundai Heavy Industries Europe N.V.
VOSSENDAAL 11, 2440 GEEL, BELGIUM Tel (32) 14-56-2200 Fax (32) 14-59-3405

PLEASE CONTACT

www.hyundai-ce.com

2011. 12 Rev 1.

HYUNDAI
HEAVY INDUSTRIES CO., LTD.

We build a better future

NEW criteria of Forklift Trucks

Hyundai introduces a new line of 7A series LPG forklift trucks. Excellent power and performance make your business more profitable.



OPSS (Operator Presence Sensing System)

Control of mast tilting, lifting and lowering is not possible through operation of the appropriate control when the operator is not in the seated position.

The new master on the job-site!

Smooth running, efficient and ergonomically designed, 15LC/18LC/20LC-7A series are made to meet your needs.

50PS/2,450rpm



Powerful Engine L4GC Engine

Market approved quality of L4GC 2.0L engine ensures incomparable performance, durability and additional value to the machine. Powerful and efficient engine provides excellent fuel economy and excellent torque for improved operation. (EPA/CARB Tier-IV Certified)

Fast and Stable Performance

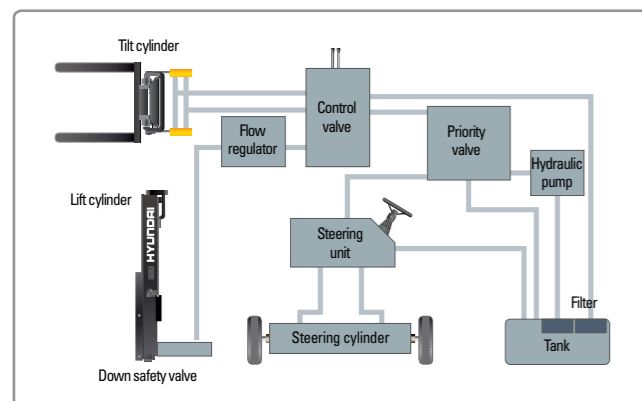
Being able to quickly raise and lower the mast, as well as tilt it forward and backward, provides the best operational conditions during unloading.

When the truck is fully loaded, mast lowering speed is carefully controlled to ensure safety by the down control valve.

Mast, Lift and Tilt Lock System is standard.



Some of the photos may include optional equipment.



State-of-the-art Hydraulic System

The latest large-capacity hydraulic system reacts quickly during operation, and a low-noise control valve increases both efficiency and durability.



Fully Hydrostatic Power Steering

A hydraulic steering system always guarantees smooth and flexible steering, preventing overrun and kick-back.



Increased Mast Tilting Angle

Utilizing the mast tilting angle of 6 degrees forward and 10 degrees backward, the operator can safely and rapidly perform loading and unloading jobs.

Faster Travel Speed & Better Gradability

The powerful high-output engine provides greater acceleration, better gradability and faster travel speed on any tough terrains or slopes.



Gradability(Loaded)

15LC-7A : 35.1%
18LC-7A : 31.3%
20LC-7A : 28.4%

Travel Speed(Unloaded)

15LC-7A : 19.5 km/h
18LC-7A : 19.5 km/h
20LC-7A : 19.7 km/h

Ergonomic operator friendly compartment design!

A design based on human engineering relieves fatigue and increases operator's efficiency.

Operator Friendly Gauges and Water-resistant Monitor Panel



- 1 Parking brake lamp
- 2 Directional indicators
- 3 Fuel warning lamp
- 4 Engine oil warning lamp
- 5 Transmission oil temperature warning lamp
- 6 Battery charging warning lamp
- 7 Air cleaner filter warning light
- 8 Working light indicator
- 9 Water separator lamp
- 10 Pre-heater indicator
- 11 Water temperature gauge
- 12 Fuel gauge
- 13 Hour meter
- 14 Engine check lamp
- 15 Seat belt warning
- 16 OPS warning



Full Suspension Seat

An attractive and adjustable seat, based on a human engineering design, provides great comfort, safety and durability.



New High Visibility for Safe Operation

The operator is able to work with increased safety and accuracy due to a wider view mast.



Some of the photos may include optional equipment.



Ergonomically Positioned Pedals

Based on human engineering, the accelerator, brake and inching pedals are optimally positioned for convenience while operating the equipment.



Cup Holder & Console Box

Additional storage spaces are located inside the operating space for operator's convenience.



Quick Response of Operating Control Levers

Only minimal operator's effort is required for precise, safe and productive control.



Adjustable Steering Wheel

Steering wheel with horn button can be adjusted by a lever on the right-hand side for the most comfortable operator position.



Easy and Safe Shift Lever

A single lever on the left side of the steering column gives the operator fast, easy control of direction. The lever must be in the neutral position before the engine can be started.



Secondary Horn

Secondary Horn gives access to lights and horn

Danger-free through high durability!

Safety and durability are priorities in design of the equipment.



Strong Overhead Guard

The safety overhead guard meets ISO 6055 regulation and protects the operator during hazardous jobs.



Parking Brake

Ratchet type parking brake requires less effort from the operator to set.



Highly Durable Trans-Axle

The optimized power transfer parts smoothly deliver desired torque to the drive wheels.



■ Some of the photos may include optional equipment.



Large Footboard & Hand Grip

Wide "open" step offers convenience and safety when entering and exiting truck.



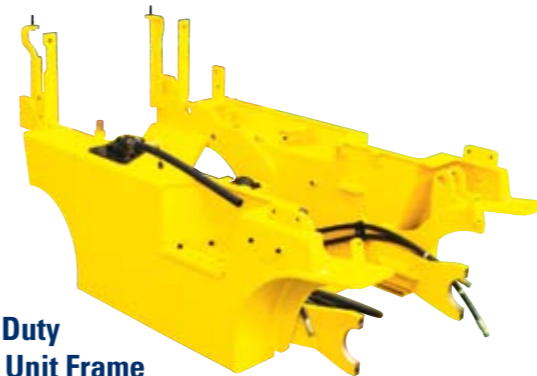
Expansion Bellows

The expansion bellows absorbs vibration and reduces noise generated from the exhaust system and also extends the life cycle of exhaust system.



Heavy Duty Single Unit Frame

Heavy duty single unit type frame, designed on the basis of accurate structural analysis, guarantees durability and safety.



Bright, Protected Headlights

Bright, Protected head lights are positioned for exceptional visibility.



Rear Safety Lamp

Rear combination lamps with directional indicators, rear lights and brake lights are positioned for a high level of safety.

Designed for quick and easy service!

An ideal arrangement of component parts ensures easy access and convenience for maintenance.



Easy Change Air Cleaner

The air filter is readily accessible for cleaning or replacement. (6inch Cyclone Type)



Fast Service Access for Daily Fluids Check



Rotational Battery Installation



One Touch, No Tool Floor Plate



Aluminum Radiator with Superb Protection Against heat



Improvement in Maintenance of Electric Parts

Various electric parts are centralized in dash board resulting in effortless troubleshooting.



Easy Maintenance Oil Check

The T/M oil level can be checked easily without any disassembly.



Brake Fluid Reservoir

Highly visible, easily accessible reservoir makes for quicker daily inspections.



An Accessible, Compact Fuse Box for Easy Inspection

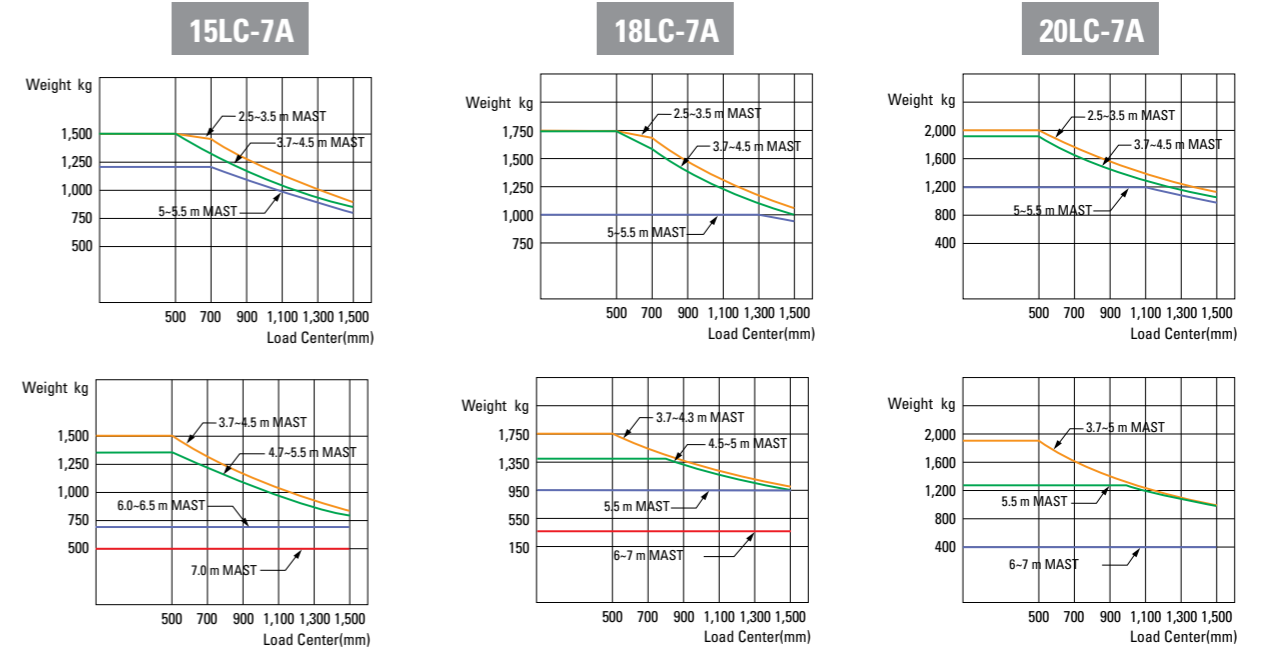
Mast Specification

Mast Type	Maximum Fork Height (mm)	Overall Height Lowered (mm)	Tilt Angle (deg)		Free Lift (mm)						Load Capacity w/ o Integral Side Shift 500mm LC (kg)			Load Capacity w/ Integral Side Shift 500mm LC (kg)			Truck Weight Unload (kg)			
			Fwd	Bwd	With Backrest			With/ o Backrest			Single Tire			Single Tire			Single Tire			
					15LC-7A	18LC-7A	20LC-7A	15LC-7A	18LC-7A	20LC-7A	15LC-7A	18LC-7A	20LC-7A	15LC-7A	18LC-7A	20LC-7A	15LC-7A	18LC-7A	20LC-7A	
2-Stage Limited Free Lift	V250	2,525	1,725	6	8	115	115	120	115	115	120	1,500	1,750	2,000	1,400	1,650	1,890	2,832	3,032	3,163
	V270	2,725	1,825	6	8	115	115	120	115	115	120	1,500	1,750	2,000	1,400	1,650	1,890	2,846	3,046	3,177
	V300	3,025	1,975	6	8	115	115	120	115	115	120	1,500	1,750	2,000	1,400	1,650	1,890	2,866	3,066	3,197
	*V330	3,325	2,125	6	8	115	115	120	115	115	120	1,500	1,750	2,000	1,400	1,650	1,890	2,886	3,086	3,217
	V350	3,525	2,225	6	8	115	115	120	115	115	120	1,500	1,750	2,000	1,400	1,650	1,890	2,900	3,100	3,230
	V370	3,725	2,325	6	8	115	115	120	115	115	120	1,500	1,750	2,000	1,400	1,650	1,890	2,913	3,113	3,244
	V400	4,025	2,475	6	8	115	115	120	115	115	120	1,500	1,750	2,000	1,400	1,650	1,890	2,938	3,138	3,268
	V450	4,525	2,825	6	6	115	115	120	115	115	120	1,500	1,750	1,975	1,400	1,650	1,870	3,004	3,204	3,335
3-Stage Full Free Lift	V500	5,025	3,075	6	6	115	115	120	115	115	120	1,500	1,300	1,500	1,400	1,220	1,415	3,038	3,238	3,368
	V550	5,525	3,325	6	5	115	115	120	115	115	120	1,100	1,000	850	1,030	940	800	3,058	3,258	3,389
	TF370 / TS370	3,735	1,805	6	6	768	768	776	1,269	1,269	1,277	1,500	1,750	2,000	1,400	1,650	1,890	2,991	3,191	3,319
	TF400 / TS400	4,035	1,905	6	6	868	868	876	1,369	1,369	1,377	1,500	1,750	2,000	1,400	1,650	1,890	3,010	3,210	3,341
	TF430 / TS430	4,335	2,005	6	6	968	968	976	1,469	1,469	1,477	1,500	1,750	1,975	1,400	1,650	1,870	3,029	3,229	3,360
	TF450 / TS450	4,535	2,105	6	6	1,068	1,068	1,076	1,569	1,569	1,577	1,500	1,750	1,950	1,400	1,650	1,840	3,048	3,248	3,379
	TF470 / TS470	4,735	2,155	6	6	1,118	1,118	1,126	1,619	1,619	1,627	1,500	1,750	1,925	1,400	1,650	1,815	3,060	3,260	3,391
	TF500 / TS500	5,035	2,255	6	6	1,218	1,218	1,226	1,719	1,719	1,727	1,500	1,400	1,875	1,400	1,320	1,775	3,080	3,280	3,411
	TF550 / TS550	5,535	2,455	6	5	1,418	1,418	1,426	1,919	1,919	1,927	1,350	950	1,250	1,265	900	1,180	3,117	3,317	3,448
	TF600 / TS600	6,035	2,655	6	5	1,618	1,618	1,626	2,119	2,119	2,127	750	525	650	700	475	600	3,189	3,389	3,520
TF650 / TS650	6,535	2,855	3	3	1,818	1,818	1,826	2,319	2,319	2,327	650	500	500	600	450	450	3,234	3,434	3,565	
TF700 / TS700	7,035	3,055	3	3	2,018	2,018	2,026	2,519	2,519	2,527	500	350	300	450	300	255	3,270	3,470	3,601	

* TS-Mast : Wide Visible 3 Stage Full Free Lift Mast with 2 Free Lift Cylinders.

* Standard

Load Capacity



Optional Items

- **SIDE SHIFT**
- **INTEGRAL SIDE SHIFT**
- **FORK** : 750 / 850 / 1,050 / 1,200 / 1,350 / 1,500mm (15/18LC-7A)
950 / 1,000 / 1,050 / 1,150 / 1,140 / 1,200 / 1,350mm
1,500 / 1,600mm (20LC-7A)
- **OVER SHOE** : 1300 / 1,500 / 1,700mm
- **TILTING** : 6/6- 6/5°, 3/3°
- **TIRE** : Cushion, No-marking
- **SEAT** : Pocket, Arm Rest, Hip Rest
- **M.C.V** : 4-Spool
- **OPSS** : Travel + Mast
- **ATTACH PIPING** : 3 Spool-piping, 4 Spool-piping
- **MASTER SWITCH**
- **BEACON LAMP**
- **HAZARD SWITCH**
- **WORK LAMP**